

INTRODUCTION

This Application Note describes how to interface a NUVO Audio Distribution System (Essentia or Concerto) to RCS CommStar controllers (CS30/CS308/CS48). This application note assumes that the NUVO System has been installed and properly configured.

Support for the NUVO System requires a RCS serial device cable and the use of COM2 or COM3 of the CommStar controller. Once configured, the NUVO system is fully integrated into the CommStar and can be controlled through a WinEVM schedule, KPG8 keypads and the LTS78 touchscreen.

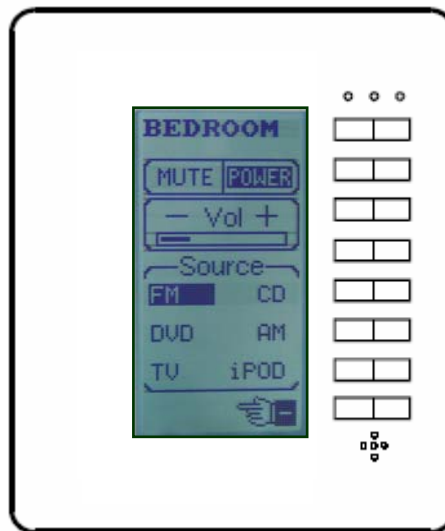
Material Needed

- NUVO Essentia or Concerto Amplifier
- RCS Serial Device Cable. Available from RCS, order PN: 001-00731

KPG8 LCD Keypad Support

KPG8s with firmware version 2.1 and higher includes support for 12 Audio Zones and 6 Audio Sources. From an Audio screen the Zones source can be selected, as well as control of the Zones Mute, Power and Volume. Pressing the top left-right button will navigate through all of the defined Audio Zones.

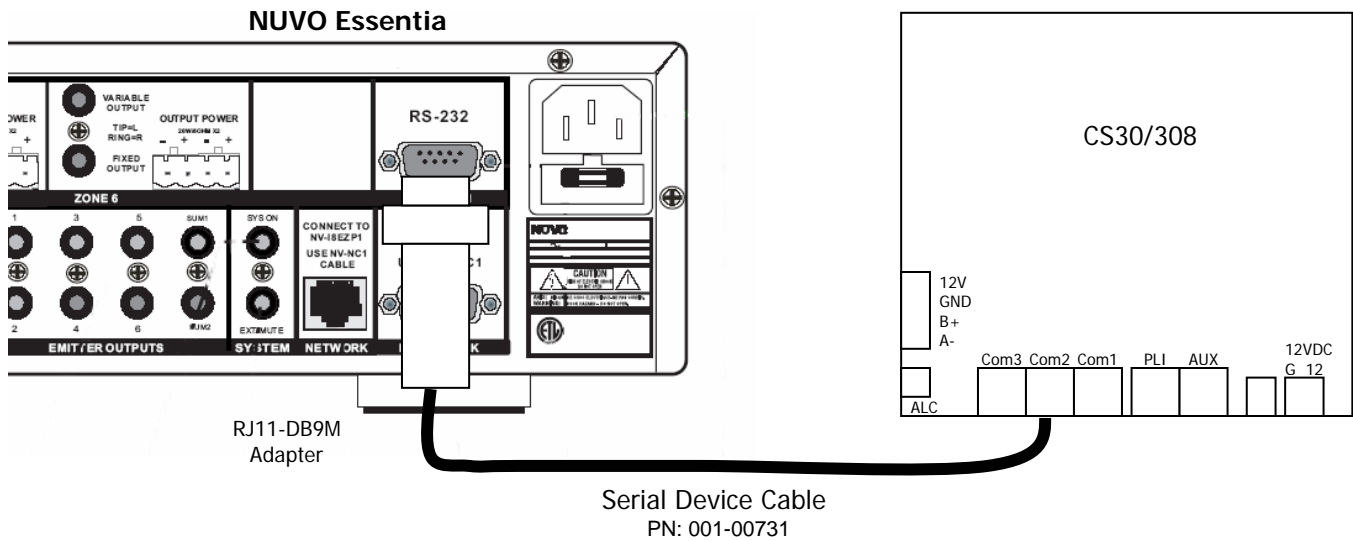
KPG8 Audio Control Screen



IMPLEMENTATION

HARDWARE

- 1) Setup and configure your NUVO system.
- 2) Connect the RCS Serial Device Cable with RJ11-DB9M adapter to the NUVO's RS232 port.
- 3) Connect the other end of the 6-conductor flat cable into COM2 or COM3 of the CommStar.



SOFTWARE

- 1) Configure the CommStar to communicate with the NUVO: Select **Define – Audio System**.

Set the following Audio System parameters:

Audio System: Select Nuvo

Serial Port Used: The physical Com port the CommStar uses to communicate to the Nuvo.

Zones: These are your Audio Zones.

Sources: These are your Audio Sources. They have been limited to 4 characters to fit the KPG8.

- 2) Press OK, WinEVM will download the information to the CommStar (if connected).

TROUBLESHOOTING

If the NUVO System does not respond to commands sent by the CommStar verify the following:

- Serial Port configuration is valid for “Nuvo” and 9800: N81
- All Cables/Connections are still intact
- Run CommStar’s Self-Test to test COM2/COM3 functionality. After the Self-Test you will need to re-download your schedule.

Controlling the NUVO System in WinEVM

WinEVM version 4.0.0, and later revisions, has built in support for controlling the NUVO system through a series of THEN actions that can be used in a schedule.

The following Audio system commands can be used anywhere in your schedule.

Select Zone: Select the Zone you wish to control.

Audio Commands:

ZONE Power ON

This command will turn ON Power to that Zone.

ZONE Power OFF

This command will turn OFF Power to that Zone.

Set ZONE Volume

This command will turn set the Zone's Volume to the "Volume" level. Volume range is 0-70 to match the Nuvo range.

Set ZONE Source

This command will turn set the Zone's Source.

ZONE Mute ON

This command will MUTE the selected Zone.

ZONE Mute OFF

This command will un-MUTE the selected Zone.

SYSTEM Power OFF

This command will Power-Off ALL Zones.

SYSTEM Mute ON

This command will MUTE the ALL of the Zones.

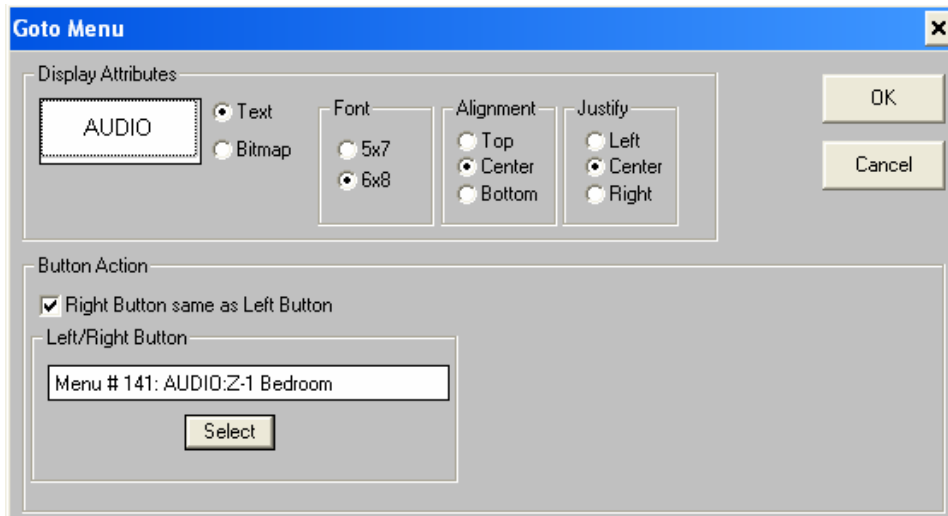
SYSTEM Mute OFF

This command will un-MUTE the ALL of the Zones.

Controlling the NUVO System with a KPG8 Keypad

To display an Audio screen on the KPG8 keypad, you must first define a "Goto Menu" button, then choose which Audio Zone to display when then that button is pressed. Any of the 12 Audio zones can be chosen.

You can also use an Audio screen as the default timeout screen either in the Keypad Setup screen or by selecting the Menu number in the setup screen of the Keypad itself.



REFERENCES

NuVo Technologies

4940 Delhi Pike
Cincinnati, Ohio 45238 USA
Phone: 513-347-2180
Fax: 513.347.8555 or 866.889.1026 e-e-mail:
TechSupport@nuvotechnologies.com
internet: <http://www.nuvotechnologies.com/>

Residential Control Systems

11460 Sunrise Gold Circle Suite A
Rancho Cordova, CA 95742
(916) 635-6784
(916) 635-7668 (fax)
e-mail: support@resconsys.com
internet: www.resconsys.com